

Handwritten musical score for the first system, consisting of four staves. The top two staves use treble clefs, and the bottom two use bass clefs. The time signature is common time (C). The notation includes various note values, rests, and bar lines. The word "Invocatio" is written at the beginning of the third staff.

Handwritten musical score for the second system, consisting of four staves. The top two staves use treble clefs, and the bottom two use bass clefs. The time signature is common time (C). The notation includes various note values, rests, and bar lines.

Handwritten musical score for the first system, consisting of five staves. The top two staves are in treble clef with a key signature of one sharp (F#) and a 3/4 time signature. The third staff is in bass clef with the same key signature and time signature. The fourth staff is in alto clef with a key signature of one sharp and a 3/4 time signature. The fifth staff is in bass clef with a key signature of one sharp and a 3/4 time signature. The music includes various rhythmic patterns, including eighth and sixteenth notes, and rests. A double bar line with repeat dots is present in the middle of the system. The word "Primo" is written below the fourth staff.

Primo

Handwritten musical score for the second system, consisting of five staves. The top two staves are in treble clef with a key signature of one sharp (F#) and a 3/4 time signature. The third staff is in bass clef with the same key signature and time signature. The fourth staff is in alto clef with a key signature of one sharp and a 3/4 time signature. The fifth staff is in bass clef with a key signature of one sharp and a 3/4 time signature. The music includes various rhythmic patterns, including eighth and sixteenth notes, and rests. A double bar line with repeat dots is present in the middle of the system.

Handwritten musical score for the first system, consisting of four staves. The top two staves are in treble clef, and the bottom two are in bass clef. The music includes various note values, rests, and dynamic markings such as *ff* and *ti*. The system concludes with a double bar line and repeat signs.

Pizzicato

Handwritten musical score for the second system, consisting of four staves. The top two staves are in treble clef, and the bottom two are in bass clef. The music continues with various note values and rests. The system concludes with a double bar line and repeat signs.

Pizzicato Pizzicato

Handwritten musical score for the first system, consisting of four staves. The first two staves are vocal lines in G major and common time, with lyrics "da da" written below the first staff. The third staff is a bass line in G major and common time. The fourth staff is labeled "Aria" and is in D minor and common time. The music is written in a cursive, handwritten style.

Handwritten musical score for the second system, consisting of four staves. The first two staves are vocal lines in G major and common time, with a trill marked with a '+' above the first staff. The third and fourth staves are bass lines in G major and common time. The music is written in a cursive, handwritten style.

The first system of the handwritten musical score consists of four staves. The top staff is in treble clef with a key signature of one flat (Bb) and a common time signature (C). It contains a melodic line with various note values and rests. The second staff is also in treble clef with a key signature of one flat, containing a similar melodic line. The third staff is in bass clef with a key signature of one flat, providing a harmonic accompaniment. The bottom staff is in bass clef with a key signature of one flat, containing a bass line with some accidentals, including a sharp sign (F#).

The second system of the handwritten musical score also consists of four staves. The top staff is in treble clef with a key signature of one flat, ending with a double bar line and repeat dots. The second staff is in treble clef with a key signature of one flat, also ending with a double bar line and repeat dots. The third staff is in bass clef with a key signature of one flat, ending with a double bar line and repeat dots. The bottom staff is in bass clef with a key signature of one flat, ending with a double bar line and repeat dots. The notation includes various note values, rests, and accidentals.

Handwritten musical score for the first system, consisting of four staves. The top two staves are in treble clef, and the bottom two are in bass clef. The time signature is common time (C). The music includes various note values, rests, and ornaments. The word "Aria" is written in the first staff, and "Tempo di Bore" is written below it.

Aria
Tempo di Bore.

Handwritten musical score for the second system, consisting of four staves. The top two staves are in treble clef, and the bottom two are in bass clef. The time signature is common time (C). The music includes various note values, rests, and ornaments.

Handwritten musical score for the first system, consisting of four staves. The notation includes treble and bass clefs, a key signature of one flat (B-flat), and a common time signature (C). The music features a variety of rhythmic values, including eighth and sixteenth notes, and rests. The first staff begins with a treble clef and a key signature of one flat. The second staff begins with a treble clef and a key signature of one flat. The third staff begins with a bass clef and a key signature of one flat. The fourth staff begins with a bass clef and a key signature of one flat. The system concludes with a double bar line and repeat dots.

Handwritten musical score for the second system, consisting of four staves. The notation includes treble and bass clefs, a key signature of one flat (B-flat), and a common time signature (C). The music features a variety of rhythmic values, including eighth and sixteenth notes, and rests. The first staff begins with a treble clef and a key signature of one flat. The second staff begins with a treble clef and a key signature of one flat. The third staff begins with a bass clef and a key signature of one flat. The fourth staff begins with a bass clef and a key signature of one flat. The system concludes with a double bar line and repeat dots.

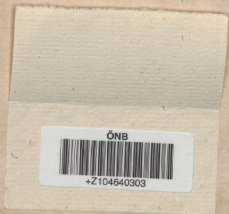


100)

160 fle



1855 2



ÖNB



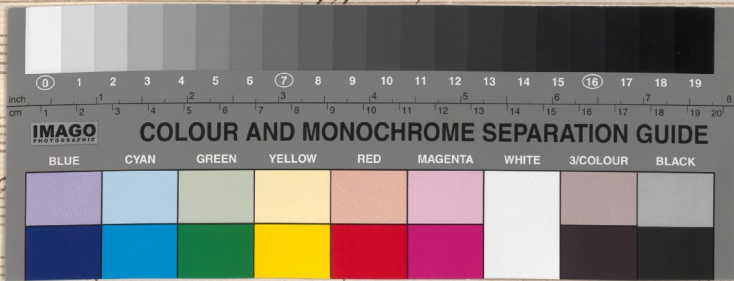
+Z104640303

Anno Secondo.

Paneggio di Verdura nel Giardino Reale.

Scena 1.

Figenia, ed Elisena.



temo un trofeo

di Achille.

Belm'

se pur ne ho in