

Soprano Solo

# Let Dread of Pain, (the First Part)

*No 4 of Songs of Sadness for the Viols & Voice*

Thomas Greaves (fl1604)



4

Let dread of Pain for-sin in af-ter

8

time Let shame to see thy-self, let shame to

11

see thy-self, thy self en-snar-ed so: Let grief let

15

grief con-ceiv'd for foul ac-curs-ed crime, Let hate of sin the

19

wor-ker of thy woe, with dread, with shame, with

23

grief, with hate, en-force To dew thy cheeks with tears,

27

with tears of deep re-morse. With dread, with shame,

31

with grief, with hate, en-force To

34

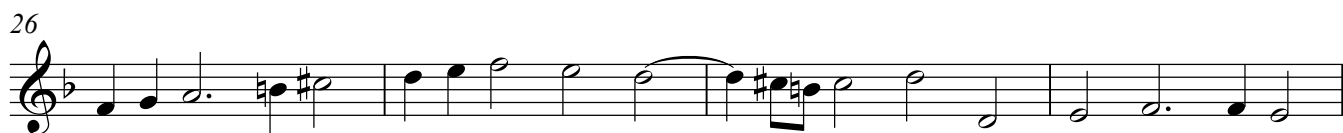
dew thy cheeks with tears, with tears of deep re-morse.

Treble Viol

# Let Dread of Pain, (the First Part)

*No 4 of Songs of Sadness for the Viols & Voice*

Thomas Greaves (fl1604)

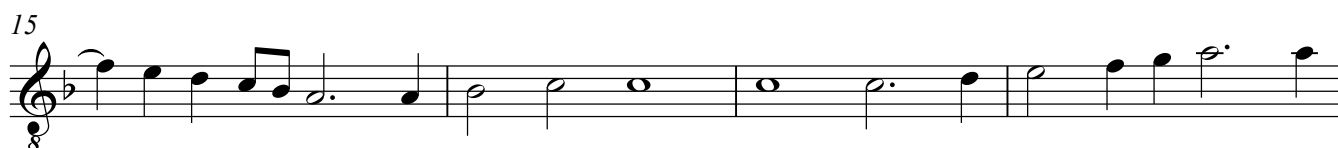


Tenor Viol 1

# Let Dread of Pain, (the First Part)

*No 4 of Songs of Sadness for the Viols & Voice*

Thomas Greaves (fl1604)

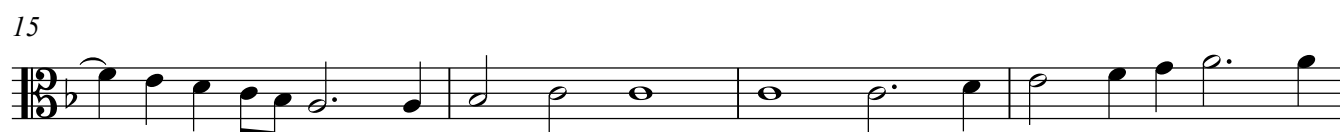


Tenor Viol 1

# Let Dread of Pain, (the First Part)

*No 4 of Songs of Sadness for the Viols & Voice*

Thomas Greaves (fl1604)

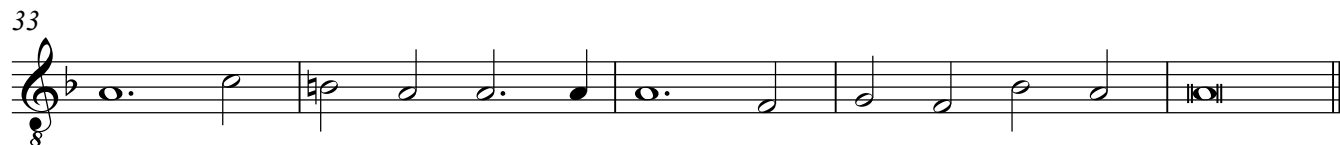
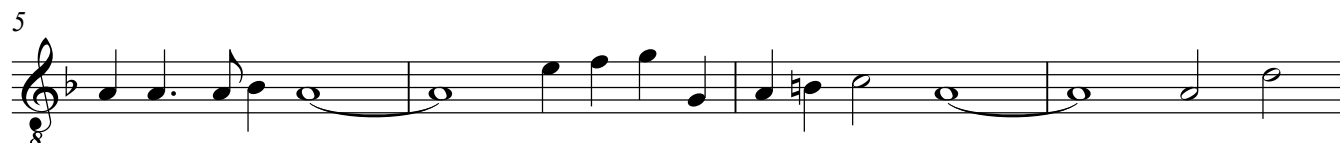


Tenor Viol 2

# Let Dread of Pain, (the First Part)

No 4 of Songs of Sadness for the Viols & Voice

Thomas Greaves (fl1604)

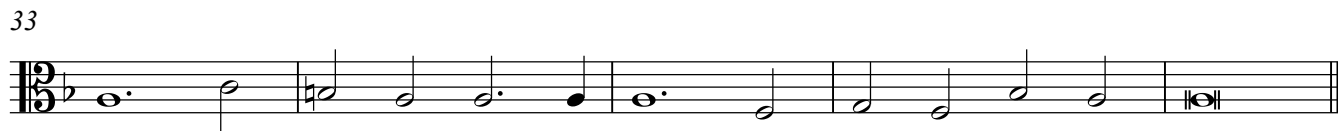
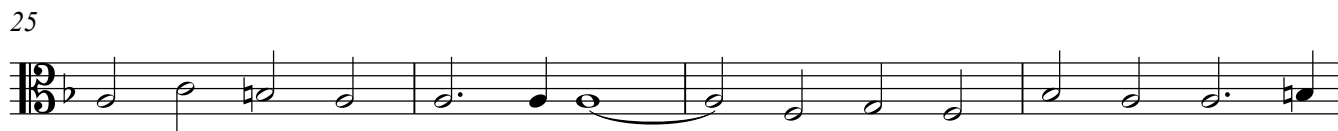
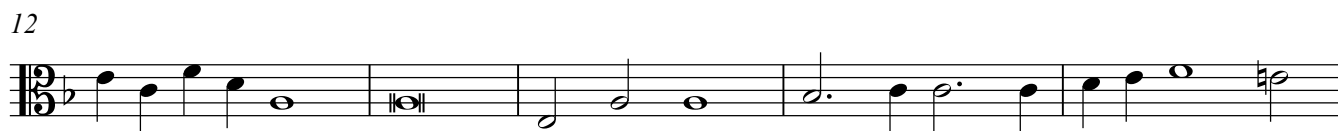


Tenor Viol 2

# Let Dread of Pain, (the First Part)

*No 4 of Songs of Sadness for the Viols & Voice*

Thomas Greaves (fl1604)



Bass Viol

# Let Dread of Pain, (the First Part)

*No 4 of Songs of Sadness for the Viols & Voice*

Thomas Greaves (fl1604)

