

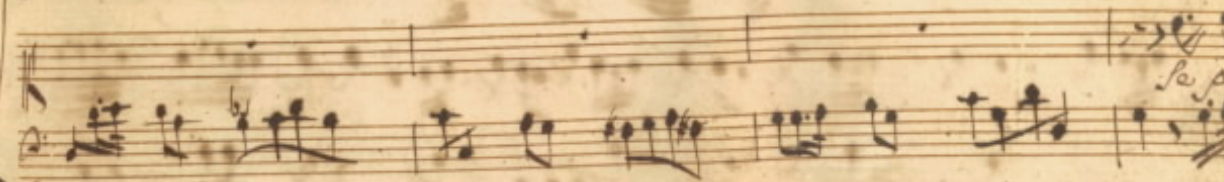
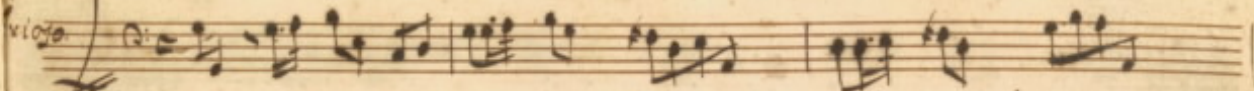
Cantata à voce sola di soprano con Flauto

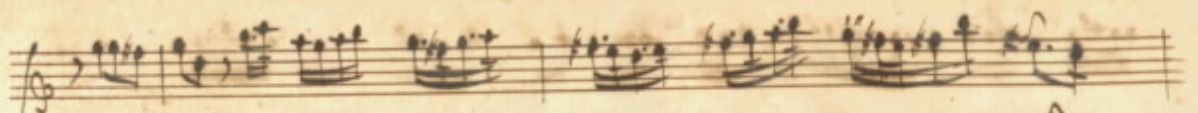
Del Sig. Tomaso Carli

Flauto



Viole

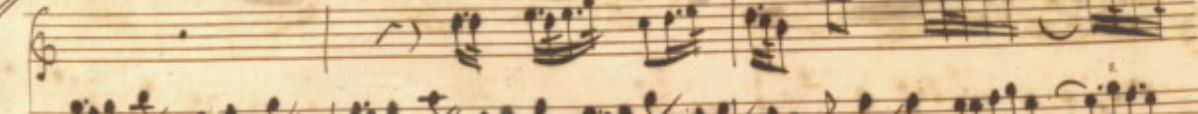
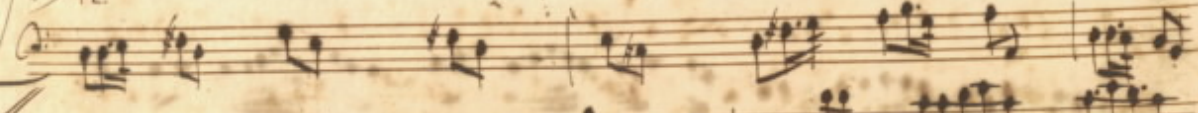




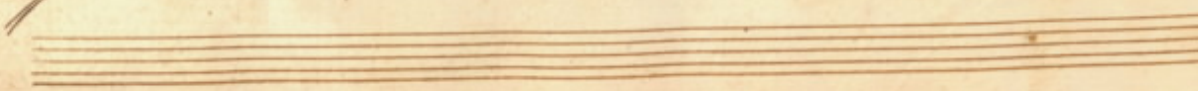
Sostitlor capace di gode-re amica pace ama-red = se il suo gio =



ix. *Se pur*



Sostitlor capace di gode-re amica pace di gode =



Handwritten musical score on aged paper. The score consists of several systems of staves. The top system includes a vocal line with lyrics: "re amica pace ama rebbè il suo gio". The second system includes a vocal line with lyrics: "ir a mica pa ce pa ce ama". The third system includes a vocal line with lyrics: "rebbè amarebbè il suo gioir". The score features complex rhythmic patterns, including sixteenth and thirty-second notes, and rests. The handwriting is in dark ink, and the paper shows signs of age and wear.

San cò rio tenore se dispensa = sol = rigo

A musical staff in treble clef with a complex rhythmic pattern of sixteenth and thirty-second notes, some beamed together.

A musical staff in treble clef with lyrics: *re fa che bra = mi il suo morir*. The notes are mostly quarter and eighth notes.

A musical staff in bass clef with complex rhythmic notation, including sixteenth and thirty-second notes.

A musical staff in treble clef with lyrics: *ma il destin con rio tenores se dispensa - sol ri*. The notes are mostly quarter and eighth notes.

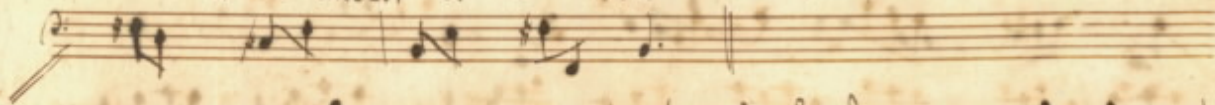
A musical staff in bass clef with complex rhythmic notation, including sixteenth and thirty-second notes.

A musical staff in treble clef with lyrics: *gore - fa che bra = mi il suo morir fa che bra =*. The notes are mostly quarter and eighth notes.

Two empty musical staves at the bottom of the page.



B = mi il suo amor il suo amor.



Rec.^{do} Un sollievo non spero e se a sperar m'induce

Lusinghiera una luce tosto lungi dal vero im-

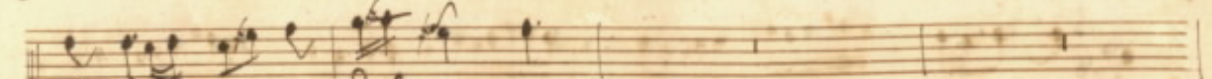
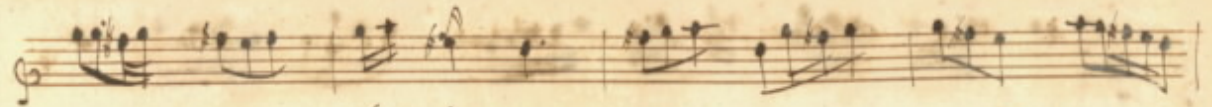
merso in nuovi orrori nello sperato ben trouo do = *ovio*

Segue

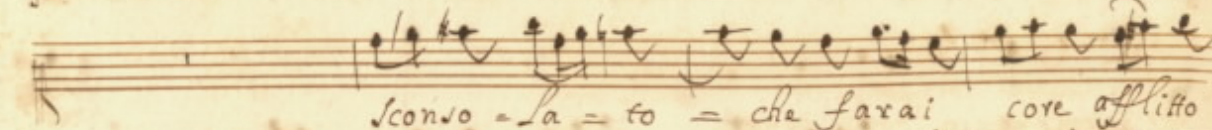
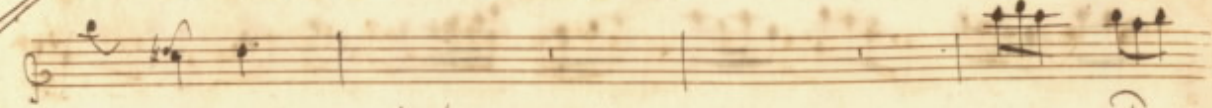
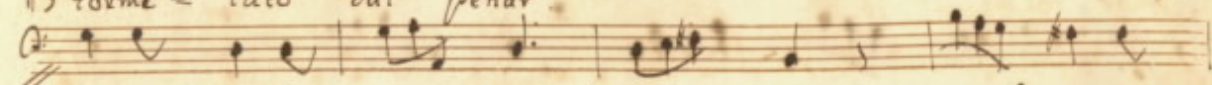
And.

And.

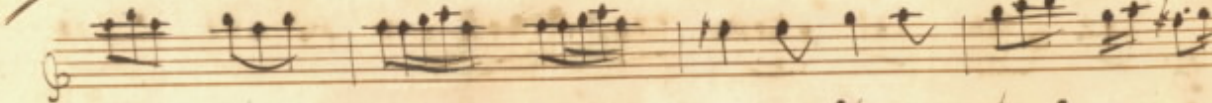
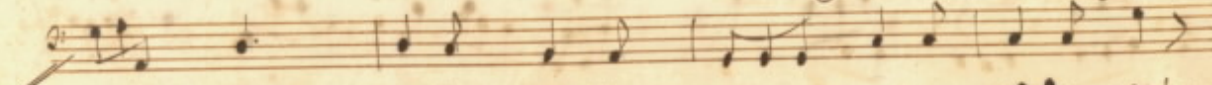
Lato



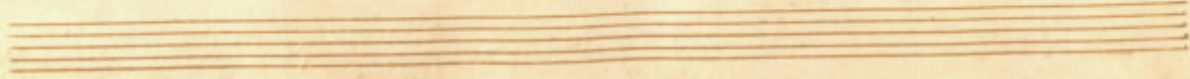
formē = tato dal penar



Sconso = la = to = che farai core afflitto



Dere. litto tormen = ta = to tormen = tato dal pe =



A musical staff featuring a complex accompaniment of chords and arpeggios, primarily in the right hand. The notes are densely packed, creating a rich harmonic texture.

nar tormen- ta = = = = = to

A musical staff with a vocal line. The lyrics "nar tormen- ta = = = = = to" are written below the notes. The notes are mostly quarter and eighth notes.

A musical staff with complex chordal accompaniment, similar to the first staff, featuring dense clusters of notes and arpeggios.

tormentato dal penar

A musical staff with a vocal line. The lyrics "tormentato dal penar" are written below the notes. The notes are mostly quarter and eighth notes.

A musical staff with complex chordal accompaniment, featuring dense clusters of notes and arpeggios.

Di sua vita i

A musical staff with a vocal line. The lyrics "Di sua vita i" are written below the notes. The notes are mostly quarter and eighth notes.

Two empty musical staves at the bottom of the page.

A musical staff featuring a series of complex, multi-measure chords, likely for a keyboard instrument. The notes are densely packed, creating a rich harmonic texture.

A musical staff with a vocal line. The lyrics are: *meſſi rai già languenti ſol frà ſtenſi ti faran= no lacrimar*

A musical staff with a vocal line. The lyrics are: *Di tua ui= tai meſſi*

A musical staff featuring a series of complex, multi-measure chords, similar to the first staff, providing accompaniment for the vocal lines.

A musical staff with a vocal line. The lyrics are: *ra= i già languen= ti ſol= frà ſten= ſi ti fa= ranno*

A musical staff featuring a series of complex, multi-measure chords, continuing the accompaniment for the vocal lines.

A musical staff with a vocal line. The lyrics are: *ra= i già languen= ti ſol= frà ſten= ſi ti fa= ranno*

A musical staff featuring a series of complex, multi-measure chords, continuing the accompaniment for the vocal lines.

Four empty musical staves at the bottom of the page, indicating the end of the written music on this page.

Musical staff with treble clef, containing several measures of music with notes and rests.

Musical staff with lyrics: *Lacri = mar Lacri = mar = si faranno*

Musical staff with notes and rests, continuing the piece.

Musical staff with notes and rests.

Musical staff with notes and rests.

Musical staff with notes and rests.

Empty musical staff.

Empty musical staff.

Empty musical staff.

Empty musical staff.

Sing

